

CHECKING "ERROR 6" PROBLEM WITH SNOW GATE DOOR

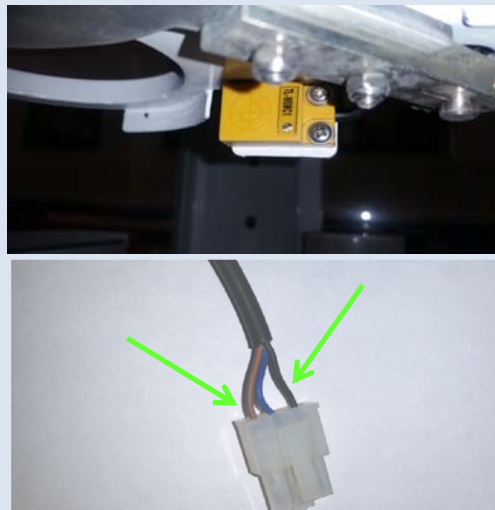
Step #1 CHECKING THE STEPPER MOTOR

With the game powered, check and see if you can open the door **BY HAND**. If you can open the door, this mean the motor is functioning normally and we need to check the wire connections, and Sensors.



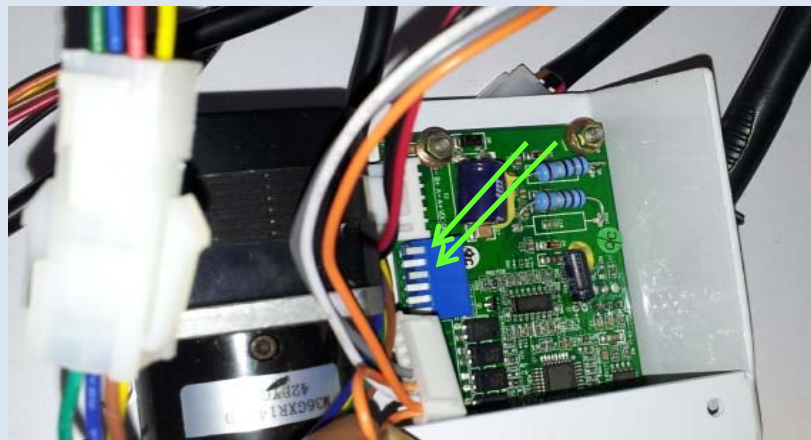
Step #2 CHECKING DOOR GATE SENSOR

Check to make sure that when the Door gate closes that the red LED on the yellow sensor turns on. This will insure that the sensor is getting power. If the LED is not lite with door closed, then check that on the 3 pin Molex coming off the sensor that you are getting 12 volts across the brown and blue wires. If the Sensor LED is lite then check across the brown and black wire to make sure the sensor is sending back 5 volts to the board.



Step #3 CHECKING MOTOR CONTROL BOARD DIP SWITCH SETTINGS

Check the dip switch settings on the Motor Direction Board. Switches 1 and 3 should be in the off (up position) position while all others should be in the on (Down position).



CHECKING "ERROR 6" PROBLEM WITH SNOW GATE DOOR

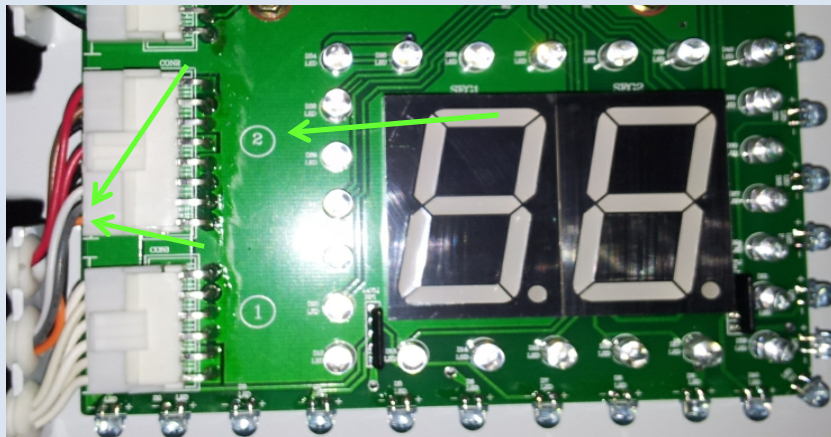
Step # 4 CHECKING THE VOLTAGE AT MOTOR DRIVER BOARD CONNECTIONS

With the Power on and the motor cover removed check The voltage off the motor direction board from the wiring harness coming off the board. The voltage should be close to 5.0 volts. Put the positive probe on the Orange wire and the negative probe on the gray wire. If voltage is close to 5.0 volts the connection is normal. Please Note: This can be done in the game but is easier to do with the tower removed and pluggend into the harness outside of the game.



Step # 5 CHECKING THE VOLTAGE AT THE SEGMENT DISPLAY BOARD

Remove the screws holding the acrylic cover over the segment display board to the right of the snow tube. Locate the number 2 connector identified to the picture to the right. Check the voltage to the gray wire (negative) and the orange (positive) and make sure there is close to 5.0 volts. If voltage is not close to 5.0 volts go to set 4, otherwise continue to step 5.



Step #6 CHECKING CONTINUITY REPLACING THE MAIN IC ON THE SEGMENT BOARD

Remove the four screws that hold the backing plate on the back of the metal Segment display board mounting bracket and you will find a 40 pin Main software chip. Replace this chip in the position show to the right if voltage is not close to 5.0 volts from test above.



CHECKING "ERROR 6" PROBLEM WITH SNOW GATE DOOR

Step #7 CHECKING CONTINUITY

Check continuity across all wire connections on the Molex with the use of the multimeter as show to the right.



Step #8 Replace the Motor driver board.

If you still can not diagnose the problem by checking the per the above instructions please replace the motor driver board.

