

CHANGING INDIVIDUAL SCORE SEG DISPLAY VALUES

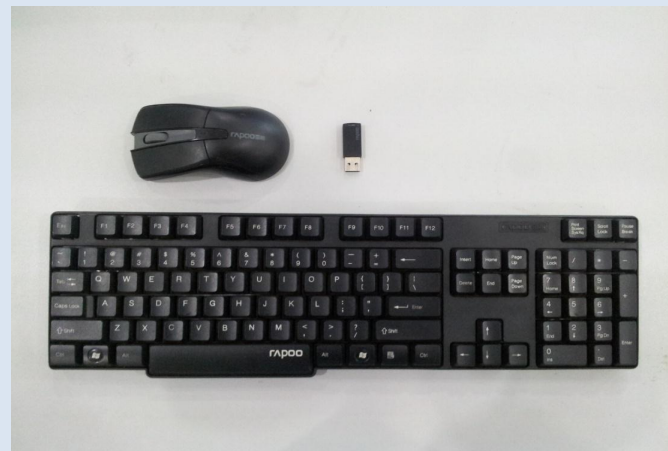
The software in Space Ballz was designed so that operators may be able to quickly and easily change any and all values shown on the nine score SEG display's. Should you wish to modify the values of the score SEG's to a value that is NOT pre-programmed in the SETUP menu by JET, please carefully review the following instructions. NOTE: We only suggest you make a change to these values should your payout need to be adjusted. Always select one of our pre-programmed settings first and then modify the software as a last result.



Step # 1

Tools needed to change software file

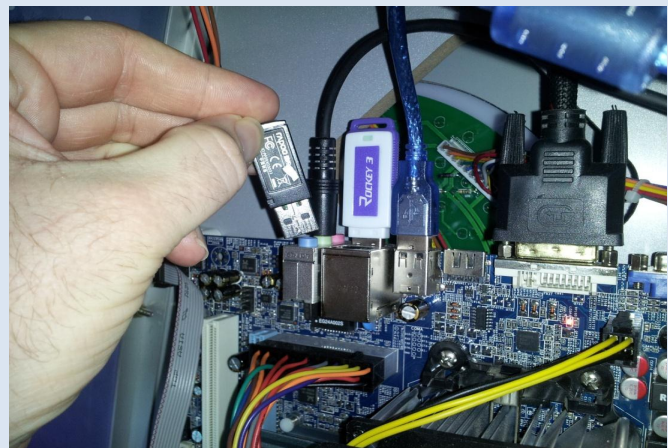
In order to modify the Notepad file in the Windows Space Ballz folder, you must have a wireless keyboard and mouse. These are not included in the game. We suggest a wireless keyboard and mouse with a 2.4GH range in order to properly use the device and see the monitor while changes are being made.



Step # 2

Insert the wireless transmitter into an open USB port

Insert the wireless transmitter into an open USB port on the computer. There should be four USB ports. Two of these four are currently used for the Watchdog security device and for the internal keypadd.

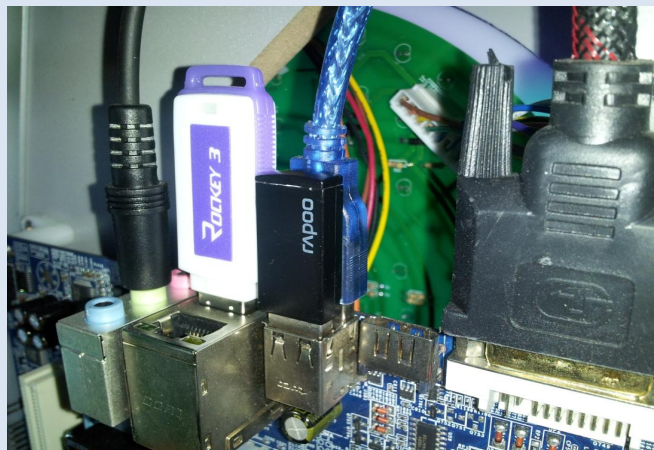


CHANGING INDIVIDUAL SCORE SEG DISPLAY VALUES

Step # 3

Ensure that the USB transmitter is securely seated

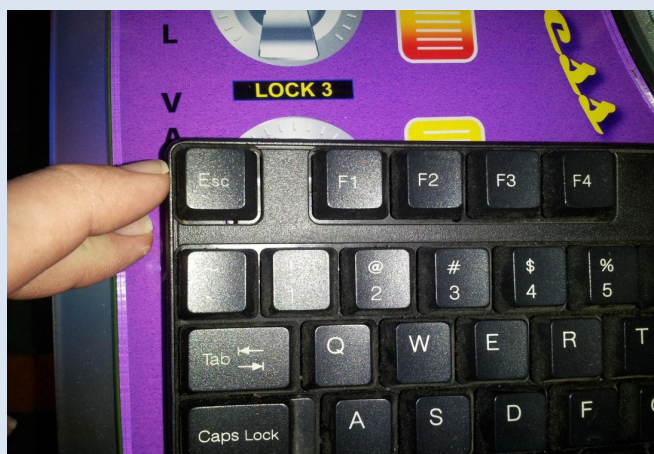
Ensure that you insert the transmitter into an available and proper USB port - (It is common for many people to accidentally install the transmitter into the modem port). Be sure that the device is in the proper port. If the volume in Windows is set properly, you should hear a confirmation "tone" through the speakers.



Step # 4

Exiting the running software program

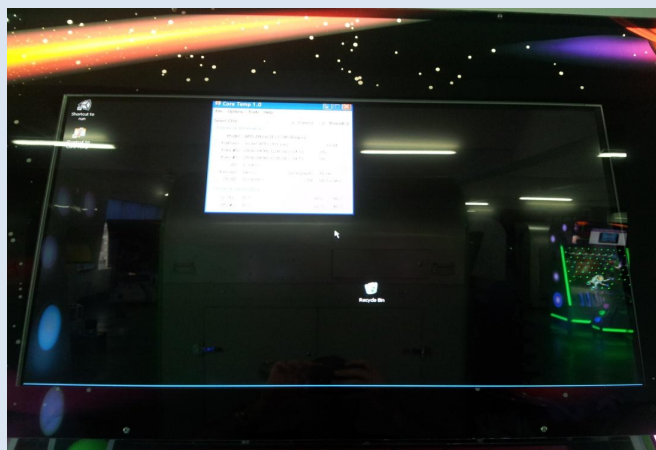
After the USB transmitter is installed into a USB port and you ensure that the keyboard and mouse are BOTH turned ON and connected. Push the "ESCAPE" button on the keyboard. This will exit the Space Ballz software and should take you to the Windows screen.



Step # 5

Viewing the Windows screen

After pushing the "ESCAPE" button - you should be viewing the Windows screen as shown in the picture to the right. The only open box should be the CPU temperature information.

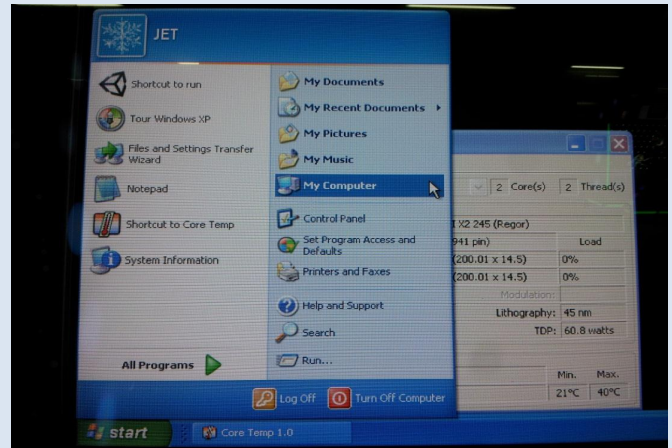


CHANGING INDIVIDUAL SCORE SEG DISPLAY VALUES

Step # 6

Locating the Space Ballz configuration files

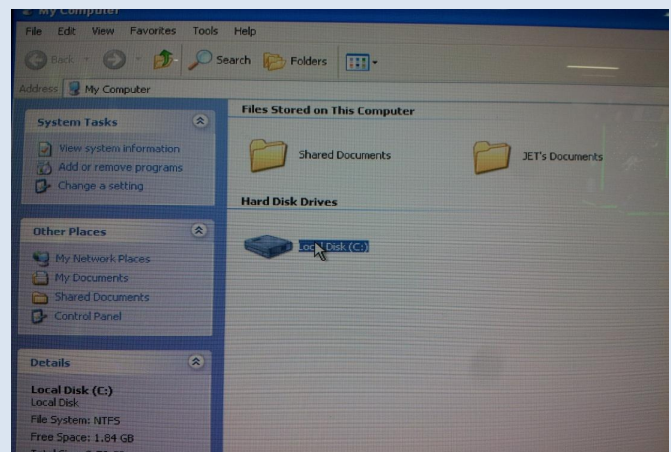
Click "START" and then "MY COMPUTER"



Step # 7

Locating the Space Ballz configuration files

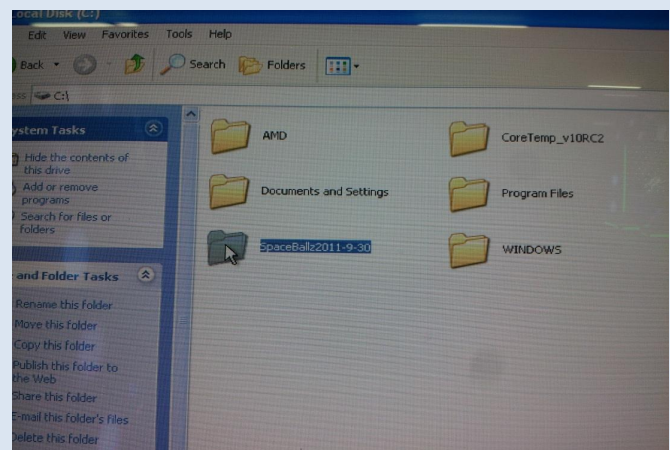
Under HARD DISK DRIVES - click "LOCAL DISCK (C:)"



Step # 8

Locating the Space Ballz configuration files

On the C DRIVE - locate and open the "SPACE BALLZ 2011-9-30" folder. Please note that the name of this file may vary depending upon your software version and whether you have replaced the flash drive.

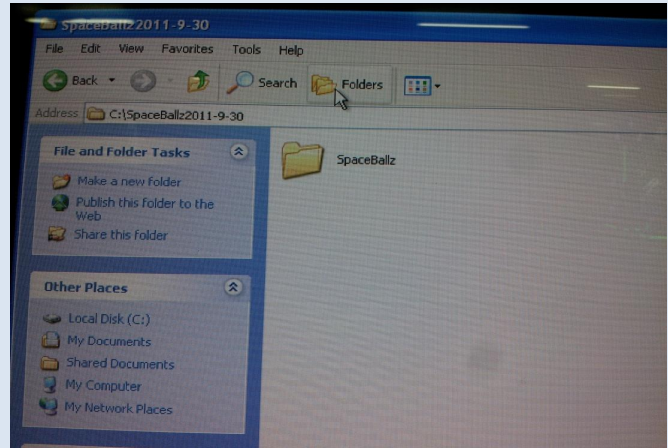


CHANGING INDIVIDUAL SCORE SEG DISPLAY VALUES

Step # 9

Locating the Space Ballz configuration files

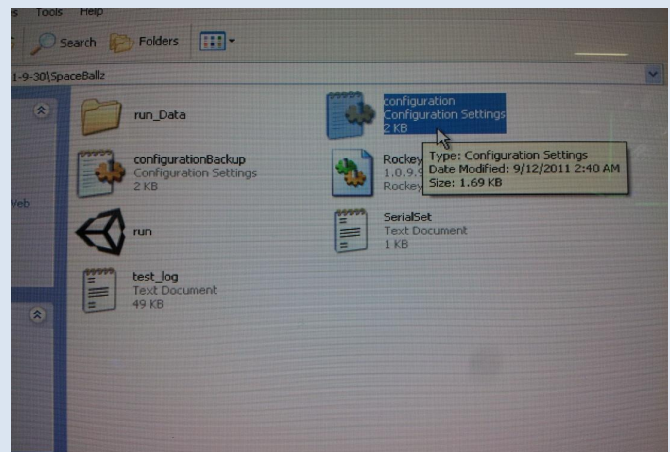
Click on and open the "SPACEBALLZ" folder



Step # 10

Locating the Space Ballz configuration files

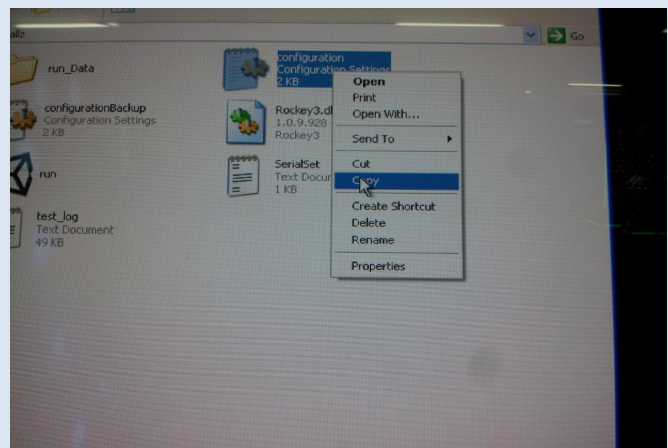
Inside the Space Ballz folder, you will see several files including a file named "CONFIGURATION". This is the file that we want to modify in order to change the default values within the Space Ballz menu. Because many features are linked to this file - any corrupt information or accidentally deletion during a change will cause problems within the unit. Because of this, JET recommend that you COPY this file first before opening it.



Step # 11

Saving a copy of the configuration file

In order to undo any mistakes made during a file modification, we recommend that you copy the "CONFIGURATION" file to a different part of the hard disk. The best way to do this is to RIGHT CLICK on the CONFIGURATION file and then click COPY. Navigate to the Windows Desktop and PASTE the file to the Desktop. Keep this file here for future use if needed.

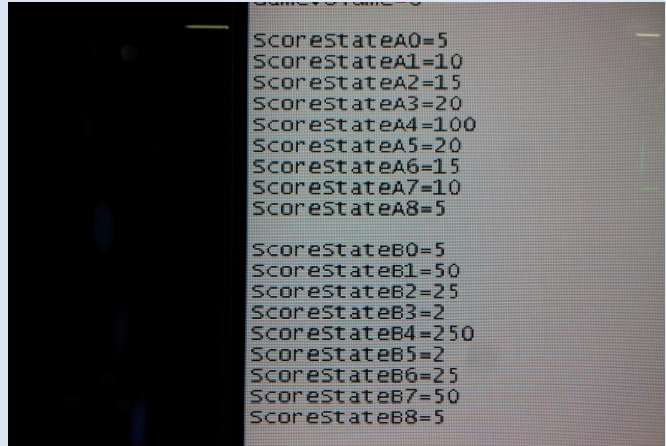


CHANGING INDIVIDUAL SCORE SEG DISPLAY VALUES

Step # 15

Score state values A & B

A closer look at settings A & B. Note that each setting has 9 different values from 0-8. Settings 0-3 can only be a two digit number. Setting 4 can be a three digit number. Settings 5-8 can only be a two digit value.



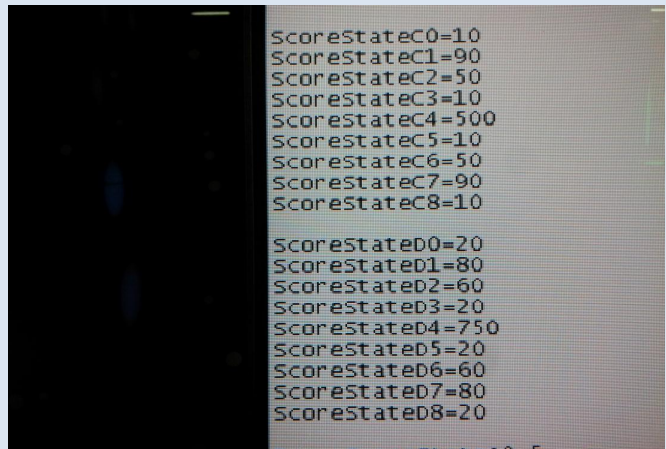
```
ScoreStateA0=5
ScoreStateA1=10
ScoreStateA2=15
ScoreStateA3=20
ScoreStateA4=100
ScoreStateA5=20
ScoreStateA6=15
ScoreStateA7=10
ScoreStateA8=5

ScoreStateB0=5
ScoreStateB1=50
ScoreStateB2=25
ScoreStateB3=2
ScoreStateB4=250
ScoreStateB5=2
ScoreStateB6=25
ScoreStateB7=50
ScoreStateB8=5
```

Step # 16

Score state values C & D

A closer look at settings C & D. Note that each setting has 9 different values from 0-8. Settings 0-3 can only be a two digit number. Setting 4 can be a three digit number. Settings 5-8 can only be a two digit value.



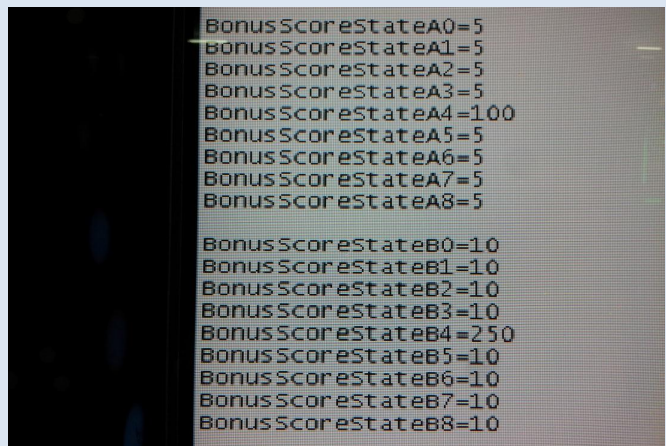
```
ScoreStateC0=10
ScoreStateC1=90
ScoreStateC2=50
ScoreStateC3=10
ScoreStateC4=500
ScoreStateC5=10
ScoreStateC6=50
ScoreStateC7=90
ScoreStateC8=10

ScoreStateD0=20
ScoreStateD1=80
ScoreStateD2=60
ScoreStateD3=20
ScoreStateD4=750
ScoreStateD5=20
ScoreStateD6=60
ScoreStateD7=80
ScoreStateD8=20
```

Step # 17

Bonus score state values A & B

A closer look at bonus settings A & B. Note that each setting has 9 different values from 0-8. Settings 0-3 can only be a two digit number. Setting 4 can be a three digit number. Settings 5-8 can only be a two digit value.



```
BonusScoreStateA0=5
BonusScoreStateA1=5
BonusScoreStateA2=5
BonusScoreStateA3=5
BonusScoreStateA4=100
BonusScoreStateA5=5
BonusScoreStateA6=5
BonusScoreStateA7=5
BonusScoreStateA8=5

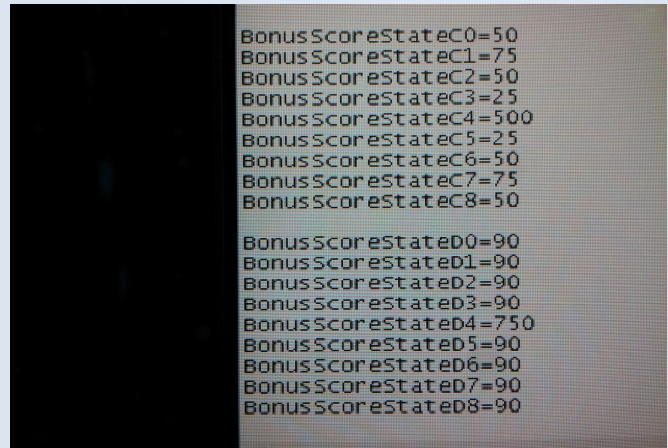
BonusScoreStateB0=10
BonusScoreStateB1=10
BonusScoreStateB2=10
BonusScoreStateB3=10
BonusScoreStateB4=250
BonusScoreStateB5=10
BonusScoreStateB6=10
BonusScoreStateB7=10
BonusScoreStateB8=10
```

CHANGING INDIVIDUAL SCORE SEG DISPLAY VALUES

Step # 18

Bonus score state values C & D

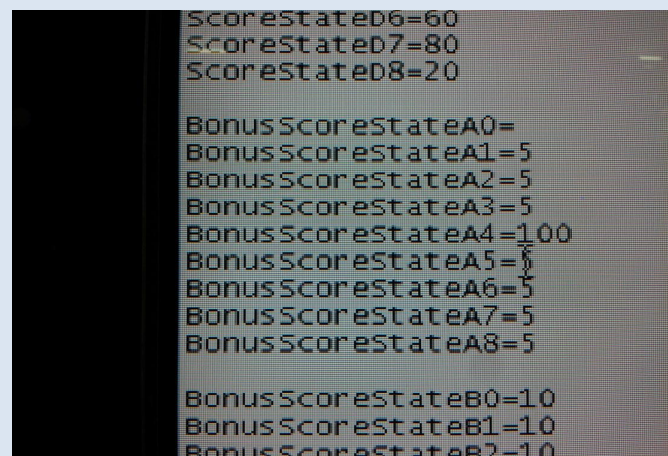
A closer look at bonus settings C & D. Note that each setting has 9 different values from 0-8. Settings 0-3 can only be a two digit number. Setting 4 can be a three digit number. Settings 5-8 can only be a two digit value.



Step # 19

Changing the values - (Deleting the old value)

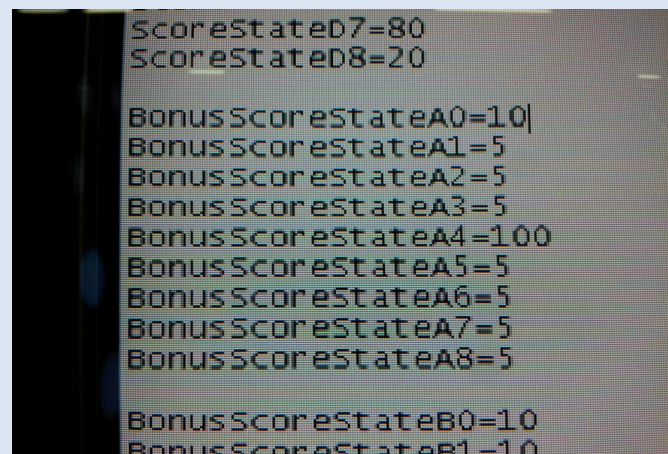
To delete a value from one of the pre-programmed settings, place the mouse cursor to the right of the value you wish to change. Then delete the old number using the "BACKSPACE" button on the keypad and type in the desired number. Repeat this step for each of the 9 different values within that setting. As shown in the example in the right - we have elected to change the Bonus Score State A Setting. First we delete the "0" setting of "5".



Step # 20

Changing the values - (Selecting a new value)

Continuing with the example to the right - use the keypad to enter the new value. Ensure this value will not exceed the number of digits allowed in the SEG display. Repeat this with each of the 9 different values within that setting. Note: Settings 0-3 can only be a two digit number. Setting 4 can be a three digit number. Settings 5-8 can only be a two digit value.

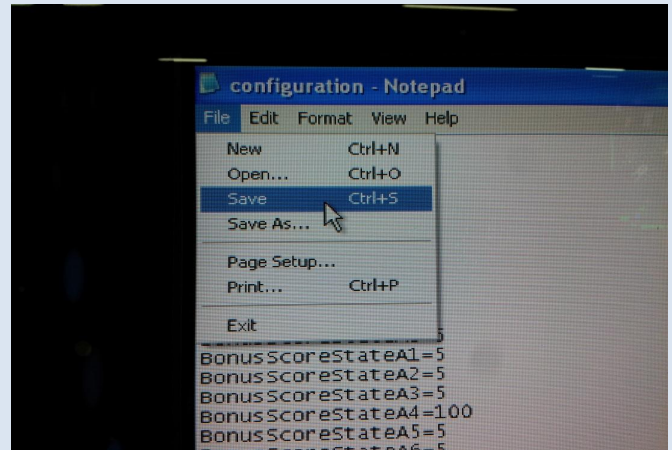


CHANGING INDIVIDUAL SCORE SEG DISPLAY VALUES

Step # 21

Saving the new information and changes

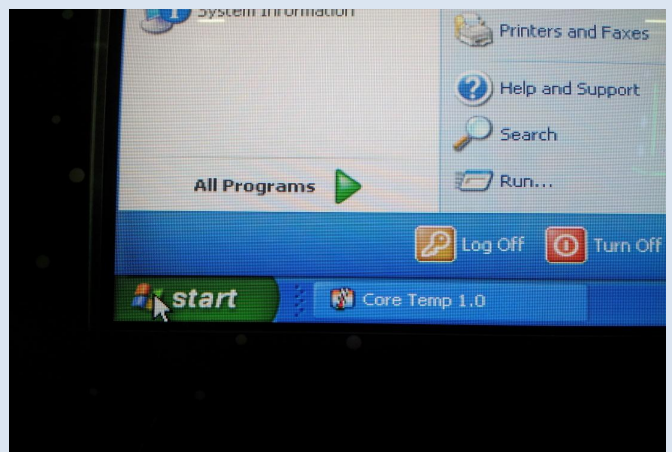
After you have changed all the desired values within each setting - you MUST save the file. Click "FILE" and then click "SAVE". At this point you may then click on the "X" in the top right corner of the window and close the Notepad file.



Step # 22

Restarting the computer

Locate and click "START" on the system tray on the desktop.



Step # 23

Restarting the computer

Click "TURN OFF COMPUTER"

