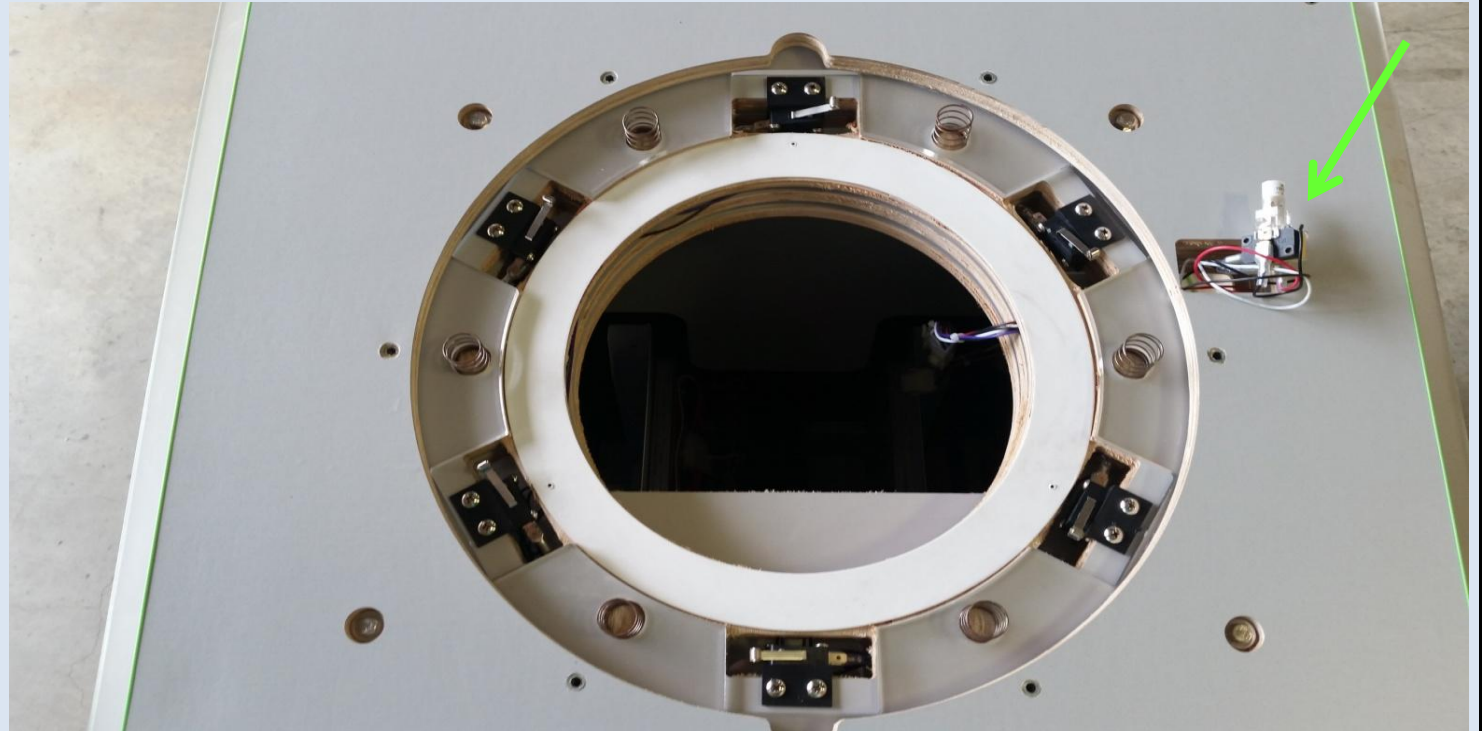


Plasma Disk Retro Fit Instructions

Step # 1

Removal of Plasma Disk

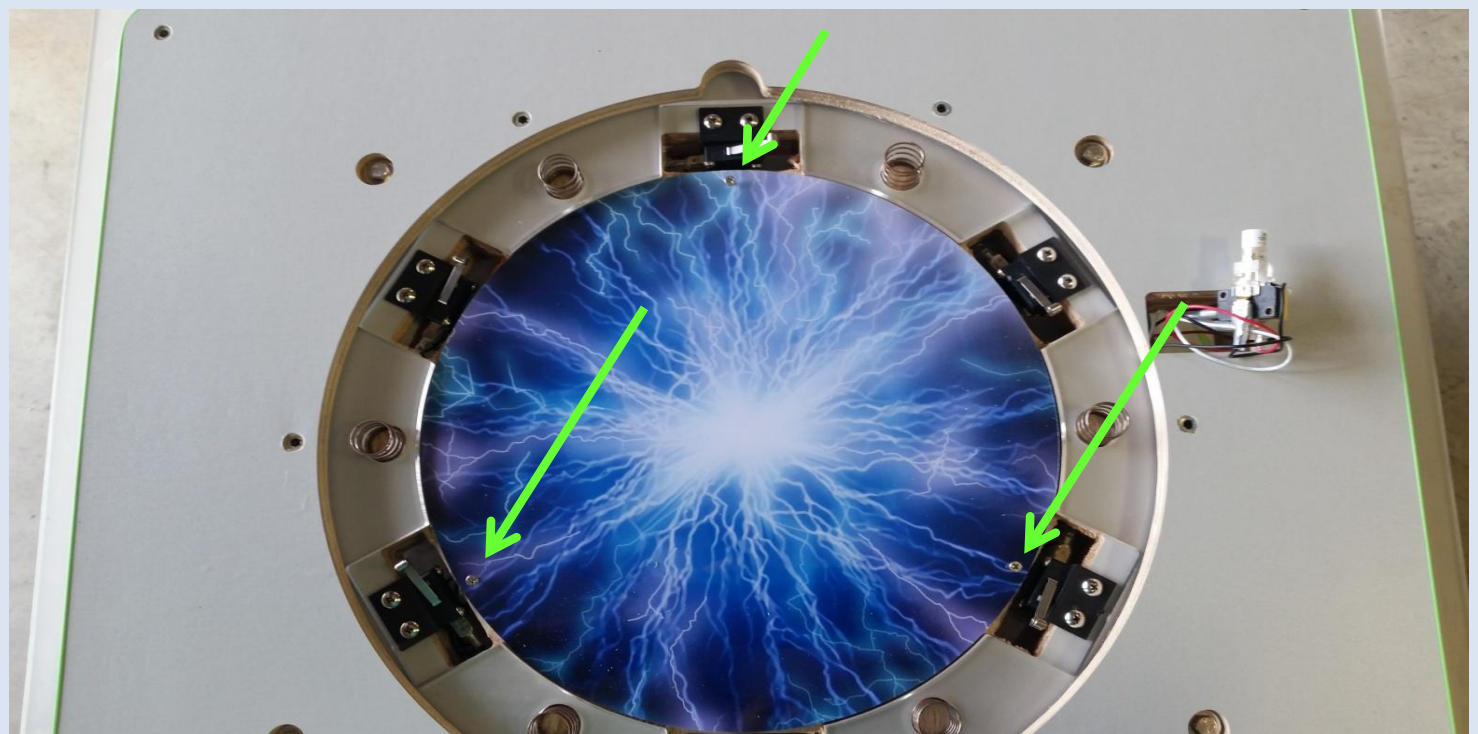
Remove old plasma Disk by removing the ten 2.5mm hex headed machine screws from the top of the player console, and carefully lifting up the control center acrylic panel. Remember to disconnect the lighted control center instruction button from the underside of the panel by turning the base of the white button housing counter clockwise a 1/4 of a turn. Then remove the plasma disk by unscrewing the unit from the underside metal bracket and remove bracket.



Step # 2

Mounting Acrylic Plasma Graphic

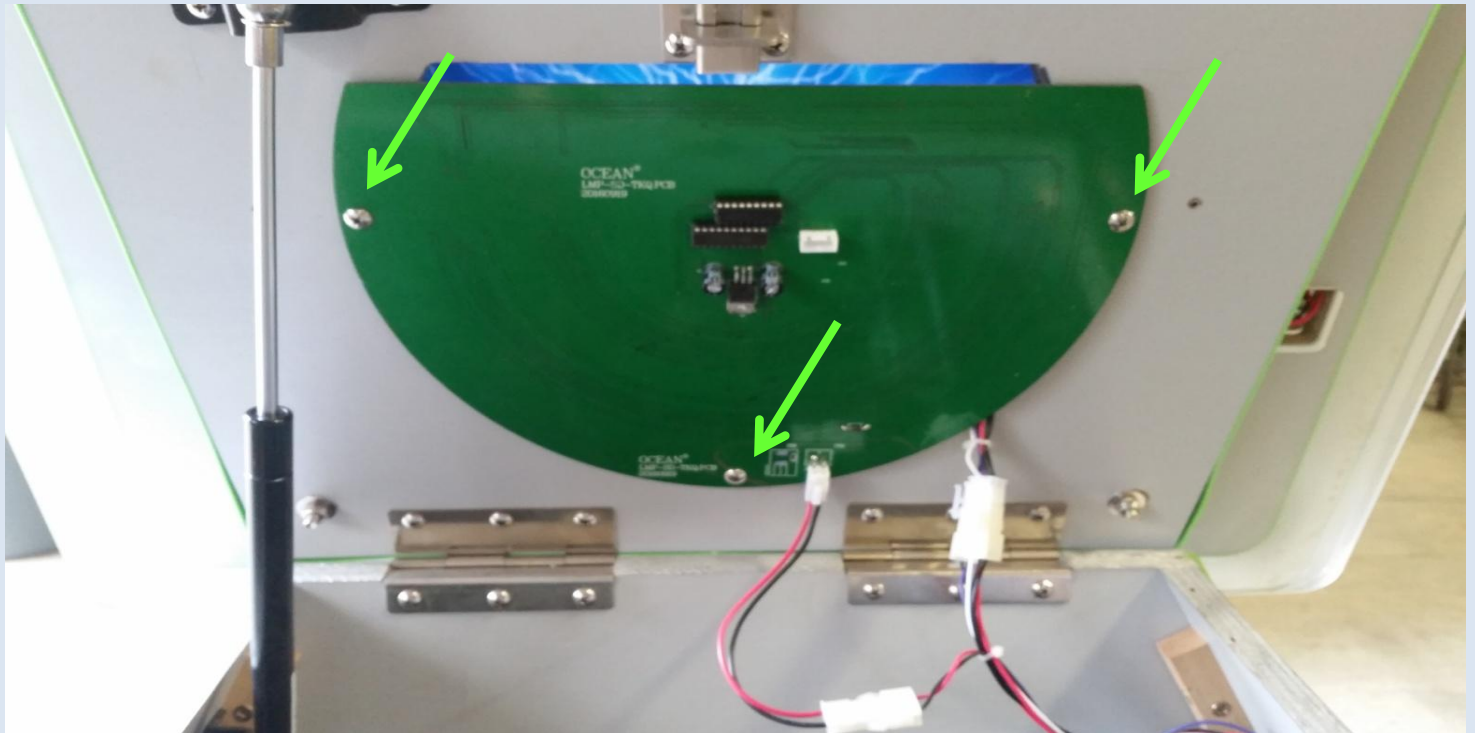
Place the Acrylic Plasma Graphic into the player console as shown to the right. Screw down to the console using the supplied wood screws.



Step # 3

Mounting the LED light Array

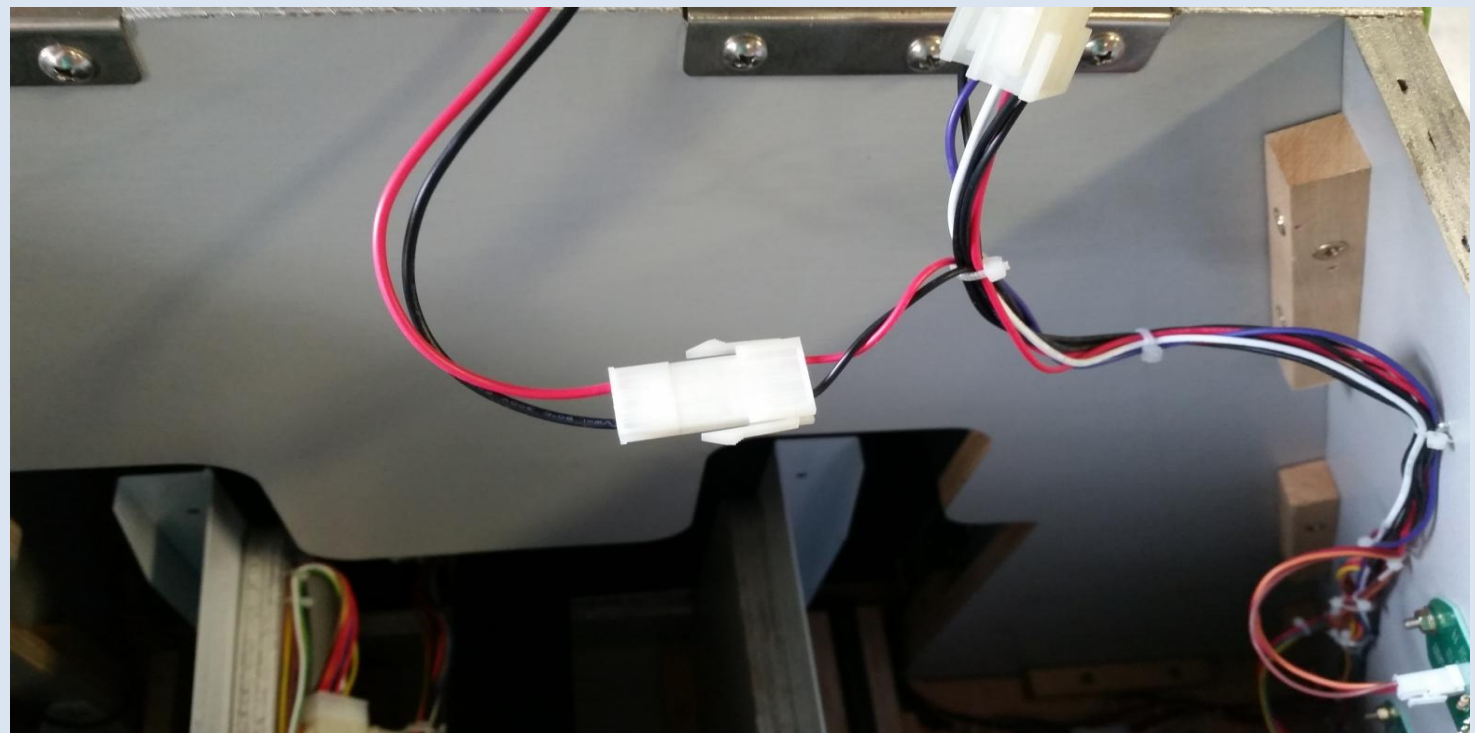
Mount the LED light Array to the underside fo the player console top door with the supplied wood screws. Please take note not to damage any LED's when mounting the board.



Step # 4

Connect LED Board

Remove the old 3.5 mm power cord for the old plasma disk at the exsisting molex connector. Attach the new LED board as show to the right with the exsisting wire harness.



Step # 5

Replace Player button

Close the top door of the player cabinet and replace the player button onto the player cabinet making sure all springs are installed and alligned.



Step # 6

Replace Player Arcylic

Replace the Player Arcylic to the top door making sure to reconnect the instructions button, then with the 10 2.5mm hex heading machine screws attach the acrylic to the top door. Power up the game and test for fucntionality.

